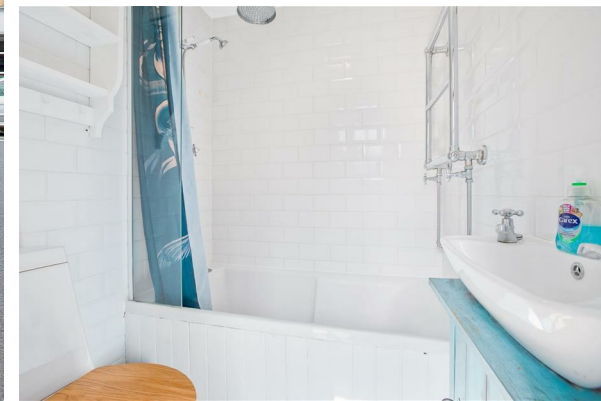


west
THE PROPERTY CONSULTANCY

TO LET

10 High Street, Eynsham, Witney, OX29 4HB

£1,300 PCM



- Prime village
- 2 bedrooms
- Full of character
- Village centre location
- Oxford c.7 miles
- Excellent village school
- Wood burning stove
- Private roof terrace
- Stylishly converted
- Witney c.6 miles

EYNSHAM

Oxford c.7 miles; Witney c.6 miles; Long Hanborough Station c.4 miles

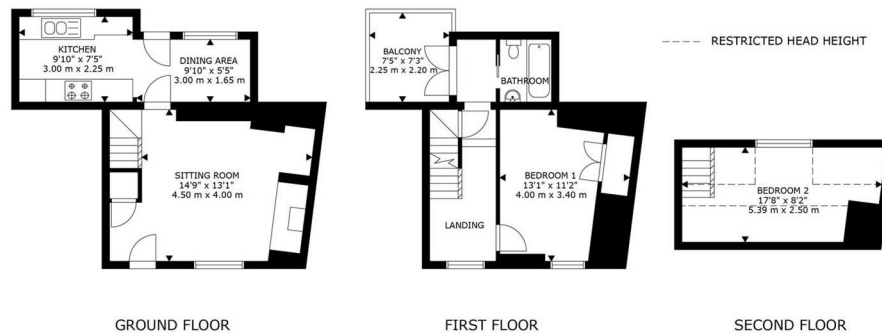
A stunning two bedroom cottage, ideally located in Eynsham, offering; Reception room with wood burning stove, kitchen and dining area, two double bedrooms, bathroom and private roof terrace. Gas central heating. Ofsted GOOD rated primary school and Ofsted OUTSTANDING rated secondary school located within a quarter of a mile of the property.

Unfurnished.

RENTAL PRICE: £1,300 pcm

THE PROPERTY

IDEALLY LOCATED IN THE CENTRE OF EYNSHAM - A beautifully presented 2 bedroom cottage with private roof terrace in the heart of Eynsham, arranged over 3 floors.



GROSS INTERNAL AREA
 GROUND FLOOR: 366 sq ft, 34 m²
 FIRST FLOOR: 280 sq ft, 26 m²
 SECOND FLOOR: 140 sq ft, 13 m²
 TOTAL: 786 sq ft, 73 m²

SITUATION

Contact: Sam Waddington
 (t) 01865 510000 (e) sam@west-tpc.co.uk

A holding deposit of 1 weeks rent will apply and be taken when making an application to secure a tenancy through WEST-The Property Consultancy. Please contact the office for further details if required.

Directions

From Oxford at the Wolvercote roundabout, head West on the A40 towards Witney. After passing the BP garage on your left hand side after approximately 4 miles, take the first exit (left) towards Eynsham, following the B4449. Pass straight over the first roundabout, and at the second roundabout, take the third exit into Eynsham. Follow the Oxford Road for approximately 500m, and number 10 will be found on the left hand side, before you reach The Red Lion Public House.